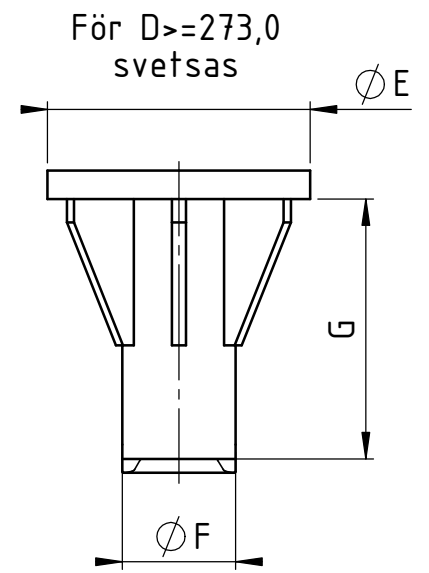
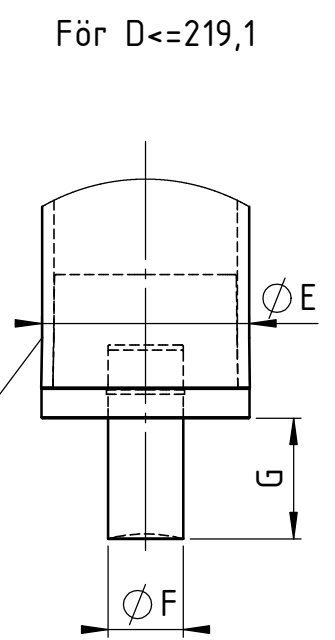


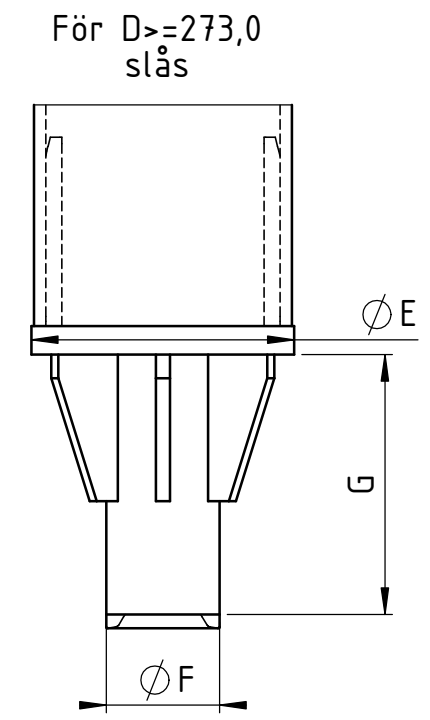
För Rör D=406,4
Konisk ände



För $D \ge 273,0$
svetsas




För $D \le 219,1$



För $D \ge 273,0$
slås

Pältyp	Rör		Tryckplatta		Hylsskarv		Bergsko		
	D	t	A	B	L (min)	d	E	F	G
SS 76.1x6.3	76.1	6.3	150	15	210	88.9	80	30	53
SS 88.9x6.3	88.9	6.3	150	15	250	101.6	90	30	53
SS 114.3x6.3	114.3	6.3	200	20	280	127.0	115	40	69.5
SS 114.3x8	114.3	8	200	20	280	127.0	115	40	69.5
SS 127.0x6.3	127.0	6.3	250	25	290	139.7	129	60	104.5
SS 139.7x8	139.7	8	250	25	310	159.0	140	60	104.5
SS 139.7x10	139.7	10	250	25	310	159.0	140	60	104.5
SS 168.3x10	168.3	10	300	30	410	191.0	170	60	104.5
SS 168.3x12.5	168.3	12.5	300	30	410	191.0	170	60	104.5
SS 219.1x10	219.1	10	300	30	550	244.5	220	80	122.5
SS 219.1x12.5	219.1	12.5	300	30	550	244.5	220	80	122.5
SS 273.0x10	273.0	10	350	30	480	298.5	278	120	275
SS 273.0x12.5	273.0	12.5	350	30	480	298.5	278	120	275
SS 323.9x10	323.9	10	400	30	560	355.6	328	130	325
SS 323.9x12.5	323.9	12.5	400	30	560	355.6	328	130	325
SS 406.4x12.5	406.4	12.5	500	40	750	445.0	410	140	410



SCANDIA STEEL

SCANDIA STEEL
TYPRITNING SS-PÅLAR

RITAD / KONSTR NS TH	KONTR / GRANSK	ARB. NR
SOLNA 2019-12-12	SKALA 1:20	BLAD 1
SS-TYP-002		E